



KPB22 Series

22mm Illuminated Pushbutton Switches



KPB22
Pushbutton Switches



SPECIFICATIONS

- RATING** : Ith 5A/250VAC. resistive load 3A/250VAC.
- CONTACT RESISTANCE** : 50mΩ MAX.@1A 12VDC. (initial value)
- INSULATION RESISTANCE** : 1,000MΩ MIN at 500VDC.
- DIELECTRIC STRENGTH** : 2,000V RMS@sea level. (initial value)
- OPERATION TEMPERATURE** : -20°C to 55°C.
- MECHANICAL LIFE** : Momentary 1,000,000 cycles
Lock 500,000 cycles
- ELECTRICAL LIFE** : 50,000 make-and-break cycles at full load.
- TORQUE** : 0.3~0.5Nm.
- OPERATION PRESSURE** : 1Pole 2.5±1N / 2Poles 3.5±1N
- TRAVEL** : ABOUT 3.2mm.
- INGRESS PROTECTION** : IP65

MATERIALS

- BEZEL** : PC
- BASE** : PBT(UL 94-V0) & PC(UL 94-V2)
- ACTUATOR** : PC & POM.
- INNER ASSEMBLY** : POM. / PA66.
- SPRING** : Stainless steel.
- SEALING** : Silicone.
- O-Ring** : Silicone.
- TERMINAL / CONTACT** : Brass, silver plated.
- HEX NUT** : PC.

HOW TO ORDER

MODEL NO. BEZEL COLOR ACTUATOR TYPE BUTTON TYPE CONTACT CONFIGURATION OPERATING TYPE LED COLOR LED VOLTAGE TERMINAL TYPE TERMINAL PLATING

KPB22 8 Silver F Flat 1 1NO 1NC
2 2NO 2NC 0 Momentary
1 Lock J Solder terminal Q Silver
R Gold

000 Transparent Actuator,below all LED color available
100 White Actuator,below all LED color available
200 Black Actuator,Non-LED
300 Transparent Red Actuator,LED in Red only.
400 Transparent Orange Actuator,LED in Yellow only.
600 Transparent Green Actuator,LED in Green only.
700 Transparent Blue Actuator,LED in Blue only.
800 Silver Actuator,Non-LED
8P1 Silver Actuator+White power,below all LED color available
8P2 Silver Actuator+Black power,Non-LED
8P3 Silver Actuator+Red power,LED in red only
8P6 Silver Actuator+Green power,LED in Green only
8P7 Silver Actuator+Blue power,LED in Blue only

| ITEM NO | COLOR |
|---------|-------------|
| 0 | Without LED |
| 1 | White |
| 3 | Red |
| 5 | Yellow |
| 6 | Green |
| 7 | Blue |

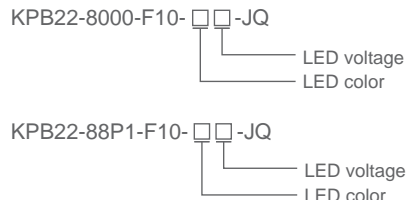
*

| ITEM NO | VOLTAGE |
|---------|------------------|
| 0 | Without Resistor |
| 3 | 3V |
| 6 | 6V |
| 12 | 12V |
| 24 | 24V |
| 36 | 36V |
| 110 | 110V |
| 220 | 220V |

LED Voltage (20mA)

* Except standard color, for other colors information please consult sales representativity.

EXAMPLE:



▼ CIRCUIT

SINGLE POLE

Without LED

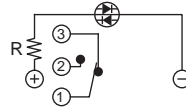


Position 1

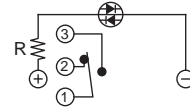


Position 2

Single Color LED

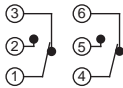


Position 1

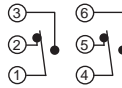


Position 2

DOUBLE POLE



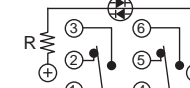
Position 1



Position 2



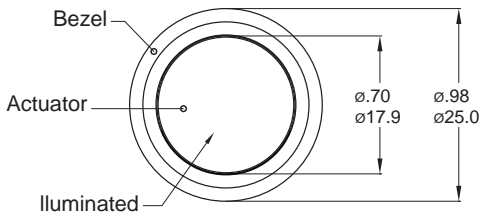
Position 1



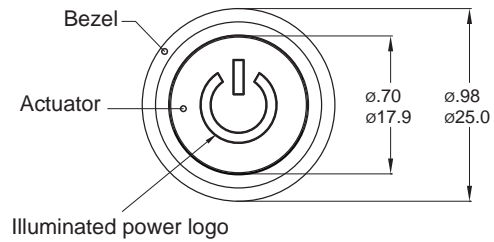
Position 2

▼ ACTUATOR OPTIONS

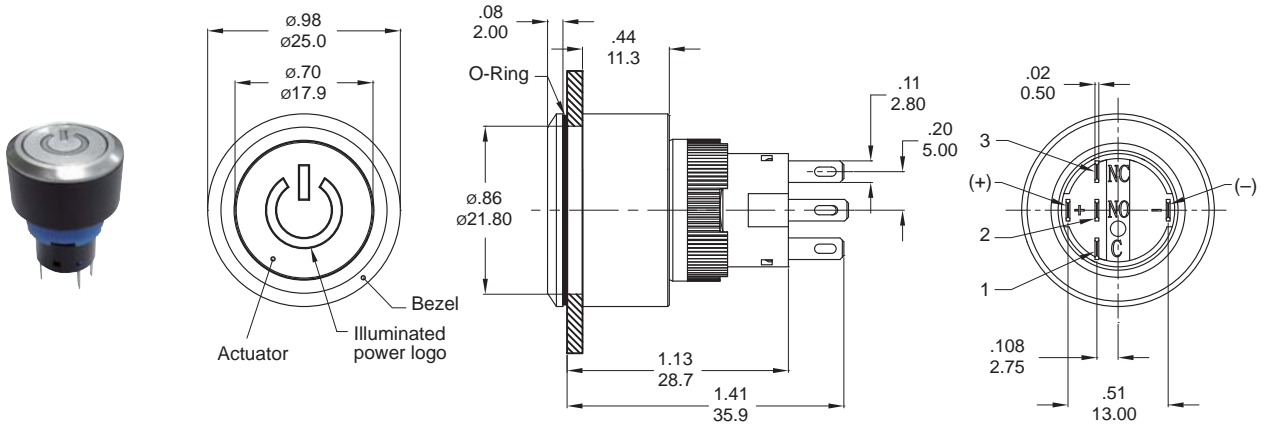
□00



8P□Power

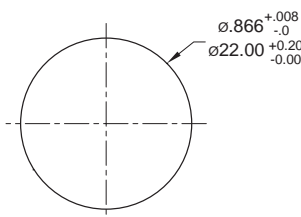


▼ DIMENSION



▼ PANEL MOUNTING

Panel thickness:
.24inch(6.0 mm)MAX.



O-RING INSTALLATION

| Proposal | In front of the panel |
|----------------------|-----------------------|
| Installation Diagram | |