

SPECIFICATIONS

CONTACT RATING: Max 0.4 VA max @ 48 VAC or DC

MECHANICAL LIFE: minimum 40,000 operations.

CONTACT RESISTANCE: 50 mΩ max.

INSULATION RESISTANCE: 500MΩ min/250VDC

DIELECTRIC STRENGTH: 500V, 50 Hz for the duration of 1 minute.
(initial value)

OPERATING TEMPERATURE: -20°C to 80°C.

INGRESS PROTECTION: IP67(In house test)

MATERIALS

ACTUATOR: Yellow PBT

Yellow nylon 6/6 for MZ terminal

HOUSING/SWITCH SUPPORT: Brass, Ni plated.

CASE: Glass filled nylon 6/6, flame retardant, heat stabilized
(UL94v-0)

CONTACT: Phosphor bronze gold plated over nickel barrier.

TERMINALS: Brass, gold plated.

TERMINAL SEAL: Epoxy

HOW TO ORDER

MODEL NO.	ACTUATOR	TERMINAL TYPE	TERMINAL PLATING	SEAL	RoHS SOLDERING	WATERPROOF CAP
<u>SP</u> 5SES1 ON-NONE-ON 5SES3 ON-OFF-ON	S105 2.80 high	M2 PC thru-hole M6 Right angle, PC thru-hole MZ (SMT) *	R Gold	E EPOXY (std)	S RoHS & Lead Free	A No waterproof cap (IP67 is not guaranteed)
<u>DP</u> 5SED1 ON-NONE-ON 5SED3 ON-OFF-ON						

* The terminal type of MZ are not suitable for DPDT.

EXAMPLE:
5SES105M2RES
5SES105M2RES-A



5SE Series

Sub-Miniature Slide Switches(Washable)



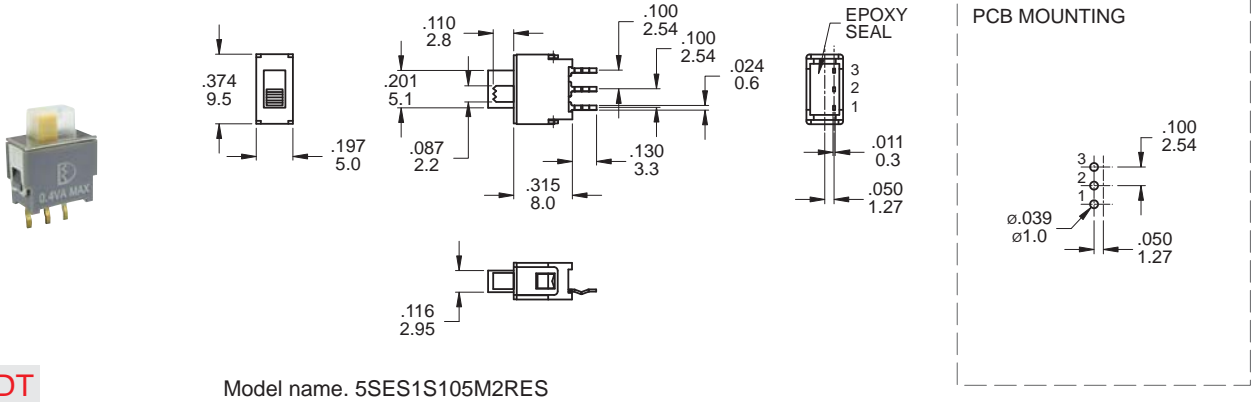
5SE
Slide Switches

▼ SWITCH FUNCTION

NO. POLES	MODEL NO.	SWITCH FUNCTION			CONNECTED TERMINALS / SCHEMATIC		
		POS.1	POS.2	POS.3	POS.1	POS.2	POS.3
SP	5SES1	ON	NONE	ON	2-1 	N/A	2-3
	5SES3	ON	OFF	ON	1-3 	OPEN	1-3
DP	5SED1	ON	NONE	ON	2-1,5-4 	N/A	2-3,5-6
	5SED3	ON	OFF	ON	1-3, 4-6 	OPEN	1-3, 4-6

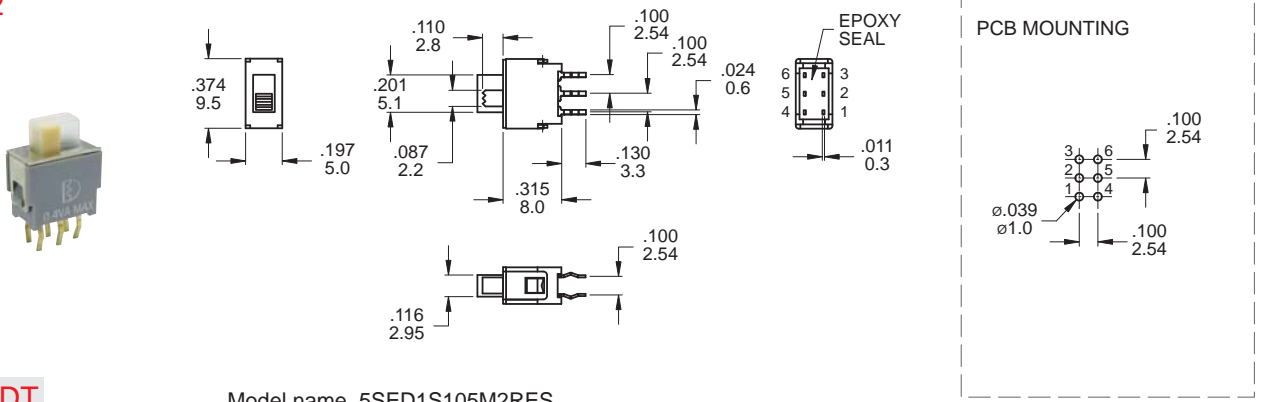
▼ TERMINAL OPTIONS

M2



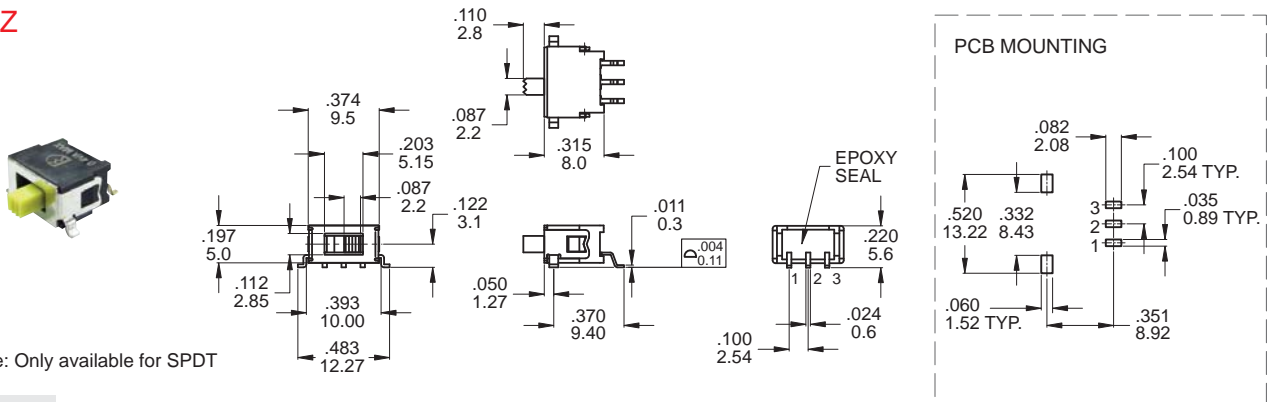
SPDT

M2



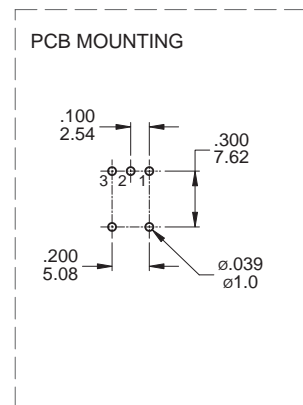
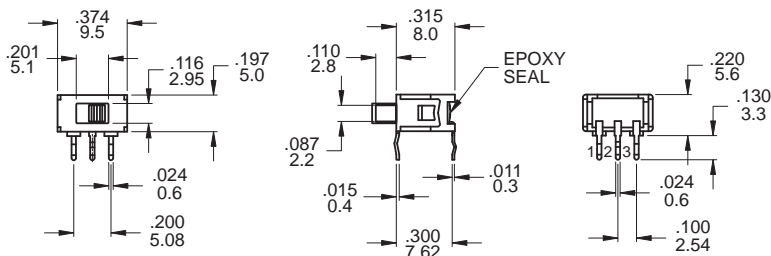
DPDT

MZ



SPDT

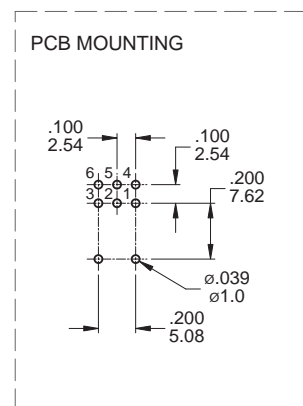
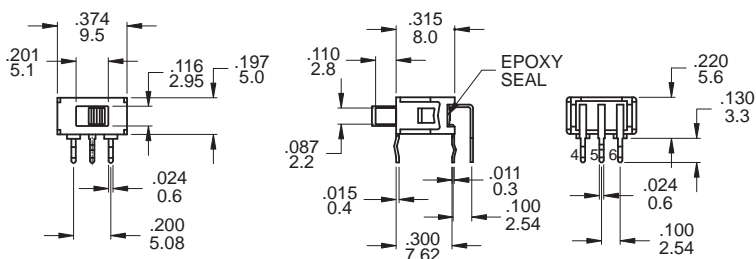
M6



SPDT

Model name. 5SES1S105M6RES

M6



DPDT

Model name. 5SED1S105M6RES

▼ SOLDERING PROCESS

WAVE SOLDERING: Recommend soldering temperature: $260 \pm 5^{\circ}\text{C}$

Duration of solder immersion: Max. 5 sec. (PCB thickness is 1.6mm)