



## SPECIFICATIONS

**CONTACT RATING:** 5A/15VDC.

**INITIAL CONTACT RESISTANCE:** 20mΩ (initial value)

**INSULATION RESISTANCE:** 1000MΩ

(500VDC between open contact).

**DIELECTRIC STRENGTH:** 1500V RMS@sea level. (initial value)

**ELECTRICAL LIFE:** 6000 cycles min.

**OPERATION FORCE FOR THE ROCKER:** 4~9N.

## MATERIALS

**HOUSING:** Nylon6/6 UL94V0 black.

**ROCKER:** Nylon6/6 UL94V2 black.

**PIN:** Brass, Nickel plated.

**PIN TERMINAL:** Brass, Coin silver, Silver plated.

**BREAK TERMINAL:** Brass, Silver plated.

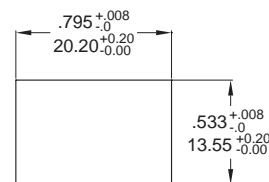
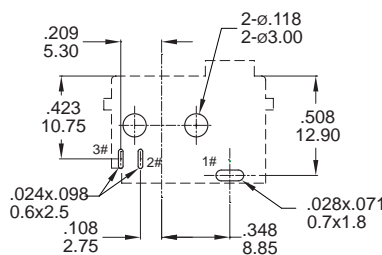
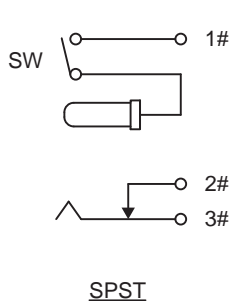
**TIP TERMINAL:** Stainless steel, Silver plated.

**CONTACT:** Brass, Coin silver, Silver plated.

**SIDE:** Brass, Nickel plated.

**SPRING:** Spring steel.

## ▼ SCHEMATIC & PCB LAYOUT



PCB LAYOUT  
BOTTOM VIEW

PANEL CUT-OUT

## ▼ DIMENSION

Units: mm

Dimensions	PIN $\phi$ A
MODEL	
LRJ-001	$\phi$ 2.50
LRJ-002	$\phi$ 2.00
LRJ-003	$\phi$ 2.10

