



## SPECIFICATIONS

**RATING:** Max : 2A / 36VDC ; Min : 0.5A / 12VDC.

**ELECTRICAL LIFE:** 200,000 make-and-break cycles at full load

**MECHANICAL LIFE:** 1,000,000 cycles

**INSULATION RESISTANCE:** 1,000 MΩ min. at 500VDC

**DIELECTRIC STRENGTH:** 2,000V RMS @ sea level (initial value)

**CONTACT RESISTANCE:** 50 mΩ max.

**OPERATION TEMPERATURE:** -20°C~+70°C

**TRAVEL:** About 2.0±0.20mm

**OPERATION PRESSURE:** 4.5N±1.5N

**INGRESS PROTECTION:** IP67(In house test)

**TORQUE:** 11.5 kgf · cm

## MATERIALS

**BUSHING:** Aluminum alloy / Stainless Steel

**BASE:** PBT (UL 94-V0)

**ACTUATOR:** PC (Translucent UL 94-V2)

**CAP:** Aluminum alloy / Stainless Steel

**SPRING:** Steel.

**SEALING:** Silicone (Translucent).

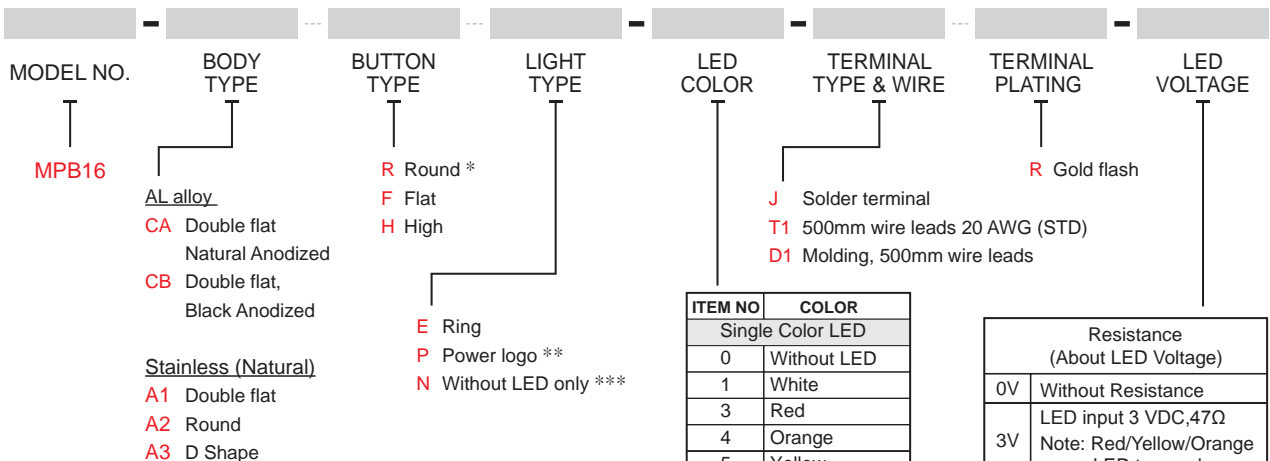
**O-Ring:** Silicone (Translucent).

**TERMINAL:** Brass, Gold flash plated.

**CONTACT:** Silver alloy.

**HEX NUT:** Brass (Nickel plated).

## HOW TO ORDER



ITEM NO	COLOR
Single Color LED	
0	Without LED
1	White
3	Red
4	Orange
5	Yellow
6	Green
7	Blue
Dual Color LED	
A	Red+Green
RGB Color LED	
RGB	Red/Green/Blue

Resistance (About LED Voltage)	
0V	Without Resistance
3V	LED input 3 VDC, 47Ω Note: Red/Yellow/Orange LED type only
6V	LED input 6 VDC, 180Ω
12V	LED input 12 VDC, 470Ω
24V	LED input 24 VDC, 1000Ω

※ ohms value of resistance tolerance: ±5%

※ Current limiting resistor is required to limit LED forward current to 20mA.

- \* For body type CA and CB only
- \*\* Not applicable for button type H
- \*\*\* For button type H only
- \*\*\*\* Except standard color, for other colors information please consult sales representativity.

EXAMPLE:

MPB16-CARE-0-JR-0 (Without LED)

MPB16-CARE-□-JR-□V





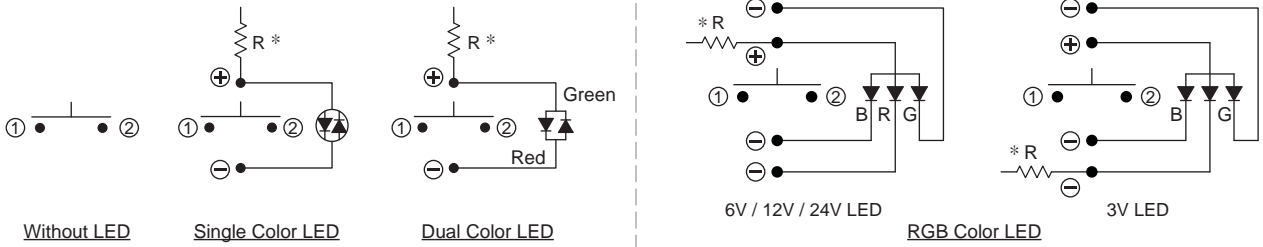
# MPB16 Series

## 16mm Metal Pushbutton Switches



MPB16  
Pushbutton Switches

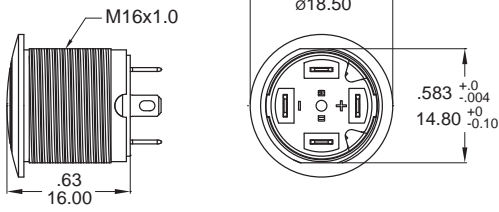
### ▼ CIRCUIT



\* Note: According to the input voltage adjustment resistance.

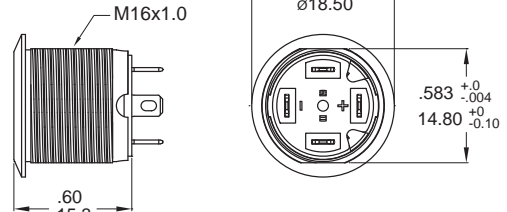
### ▼ BODY OPTIONS

#### CA / CB Double flat

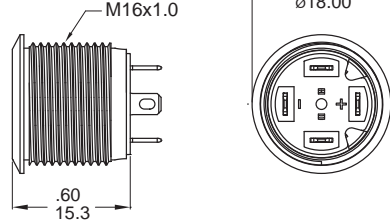


Available with round button only

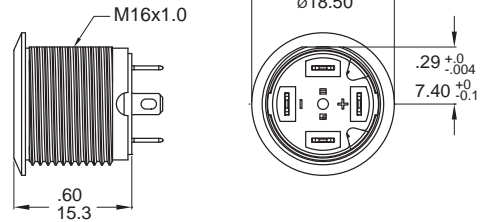
#### A1 Double flat



#### A2 Round

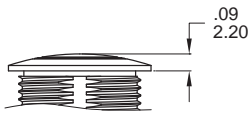


#### A3 D Shape



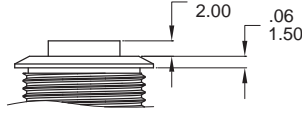
### ▼ BUTTON OPTIONS

#### R Round



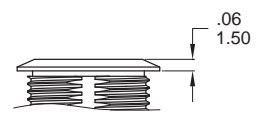
Available with body type CA and CB only

#### H High \*



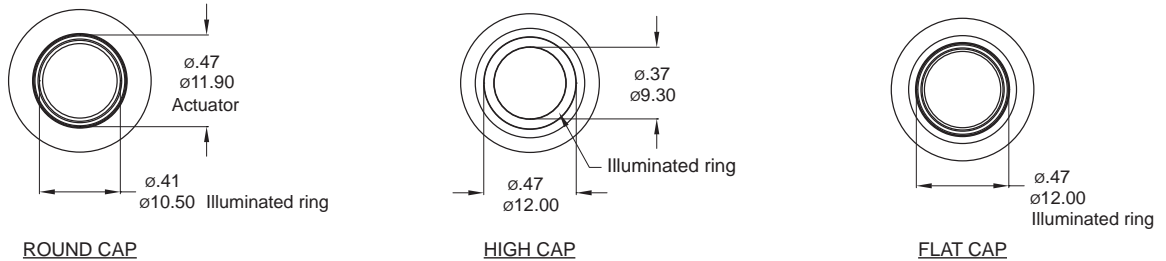
\* Note: Available with body type A1-A3 only

#### F Flat \*

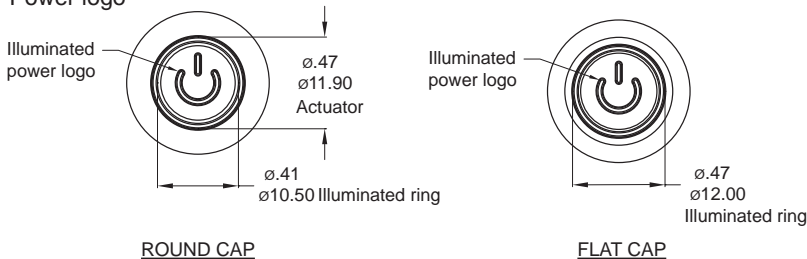


### ▼ LIGHT OPTIONS

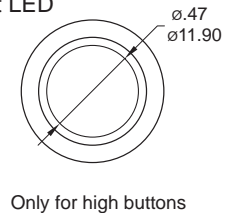
#### E Ring



#### P Power logo



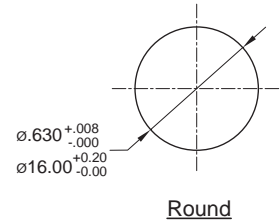
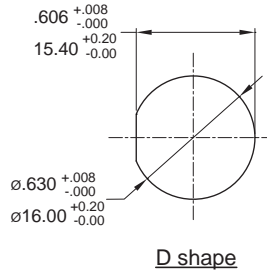
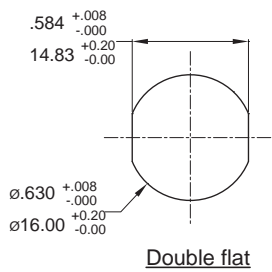
#### N Without LED



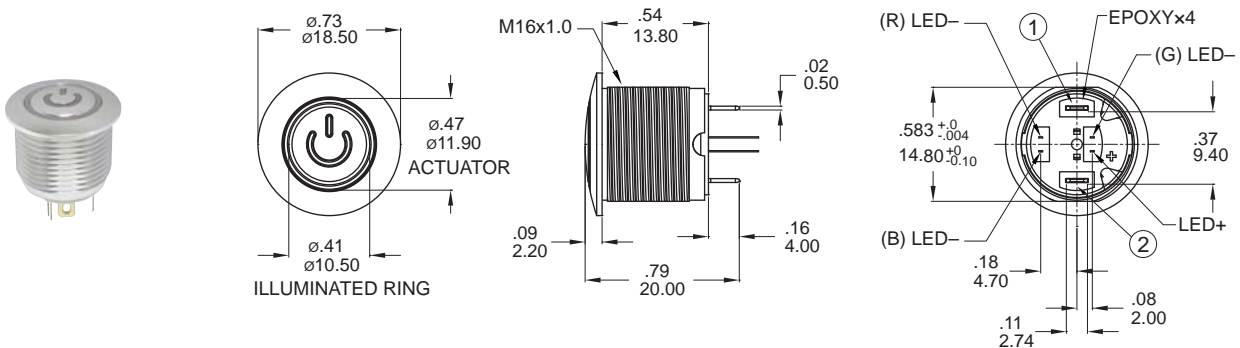
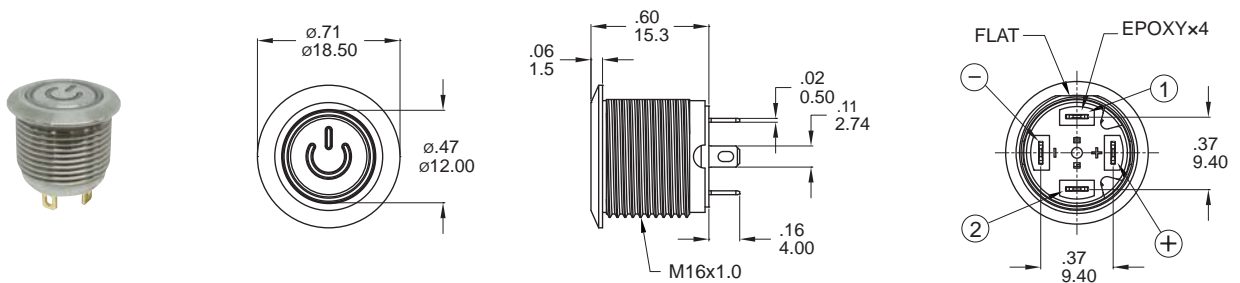
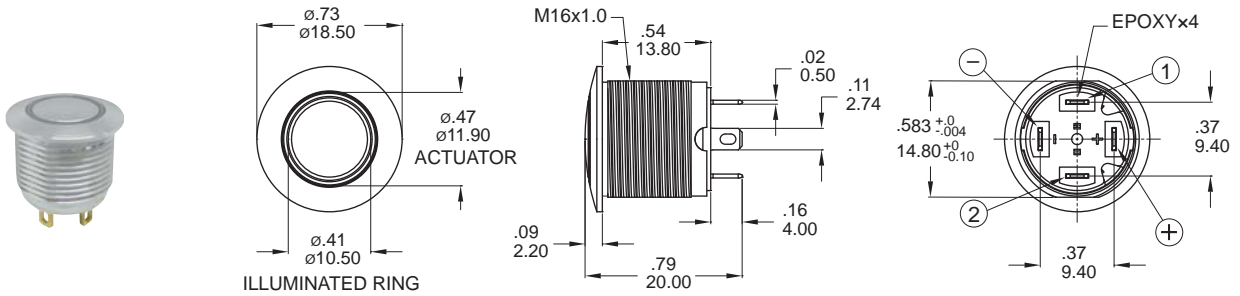


## ▼ PANEL MOUNTING

Panel thickness:  
8.0 mm (.031inch) MAX.



## ▼ DIMENSION

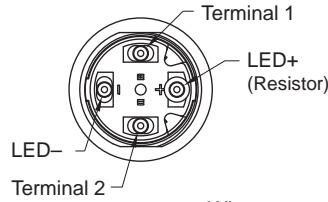
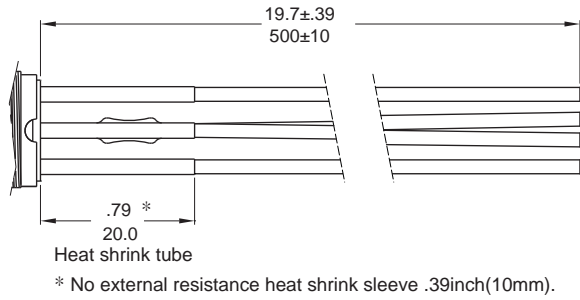




## ▼ WIRE OPTIONS

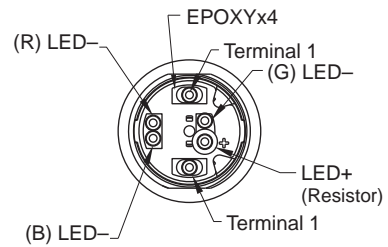
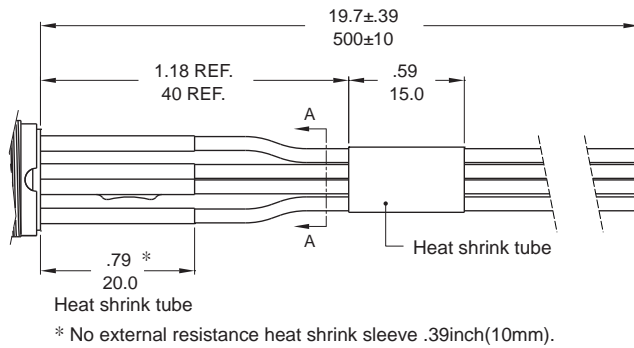
\* Please consult sales for additional wire options.

### T1 500mm wire leads 20 AWG



Wires:  
 Black wire - Terminal  
 Red wire - LED (+) Positive  
 Green wire - LED (-) Negative  
 \* No Illumination: Black Wire - Terminal

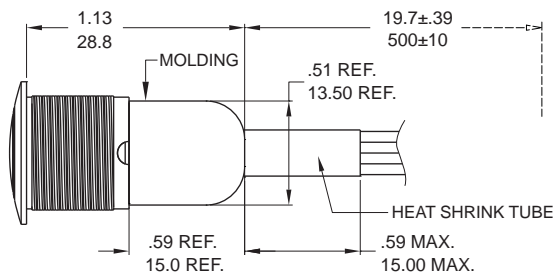
### T1 500mm wire leads 20 AWG (RGB LED)



#### SECTION A-A

Wires:  
 Black wire - Terminal  
 White wire - LED (+) Positive  
 Red wire - (R)LED (-) Negative  
 Blue wire - (G)LED (-) Negative  
 Green wire - (B)LED (-) Negative

### D1 Molding, 500mm wire leads



Wires: 20 AWG  
 Black wire - Terminal  
 Red wire - LED (+) Positive  
 Green wire - LED (-) Negative  
 \* No Illumination: Black Wire - Terminal

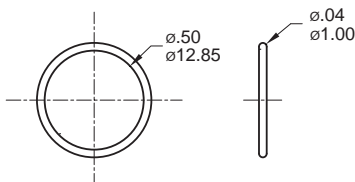
RGB LED Wires: 22 AWG  
 Black wire - Terminal  
 White wire - LED (+) Positive  
 Red wire - (R)LED (-) Negative  
 Blue wire - (G)LED (-) Negative  
 Green wire - (B)LED (-) Negative

## ▼ HARDWARE

\* Standard hardware : 1 nut, 1 O-ring  
 \* For further information please consult sales representativity.

### O-RING (Std.)

Model name. FCP-MP602



### NUT (Std.)

Model name. MNU-PY01

