





## ▼ CIRCUIT

### SINGLE POLE

Without LED

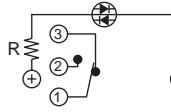


Position 1

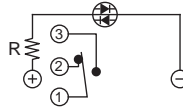


Position 2

Single Color LED

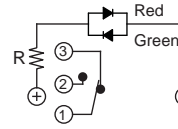


Position 1

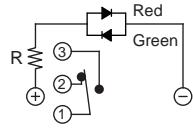


Position 2

Dual Color LED

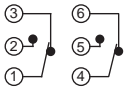


Position 1

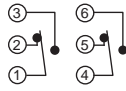


Position 2

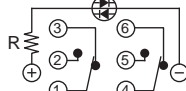
### DOUBLE POLE



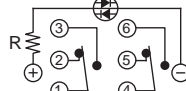
Position 1



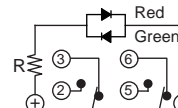
Position 2



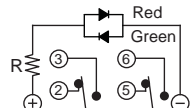
Position 1



Position 2



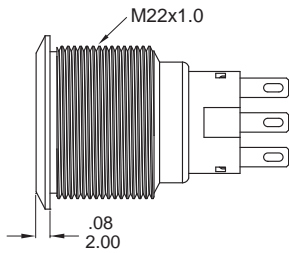
Position 1



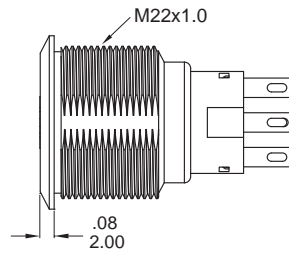
Position 2

## ▼ BODY OPTIONS

A0 / C3 Round



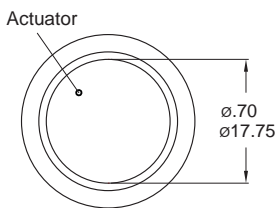
D0 / F3 Double flat



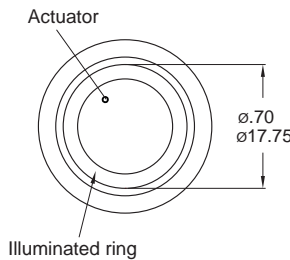
Available with light types E1 and E3 only.

## ▼ LIGHT OPTIONS

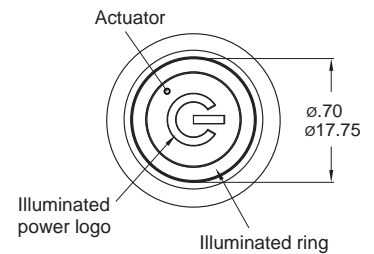
0 Without LED



E / E2 Ring (Moveable)



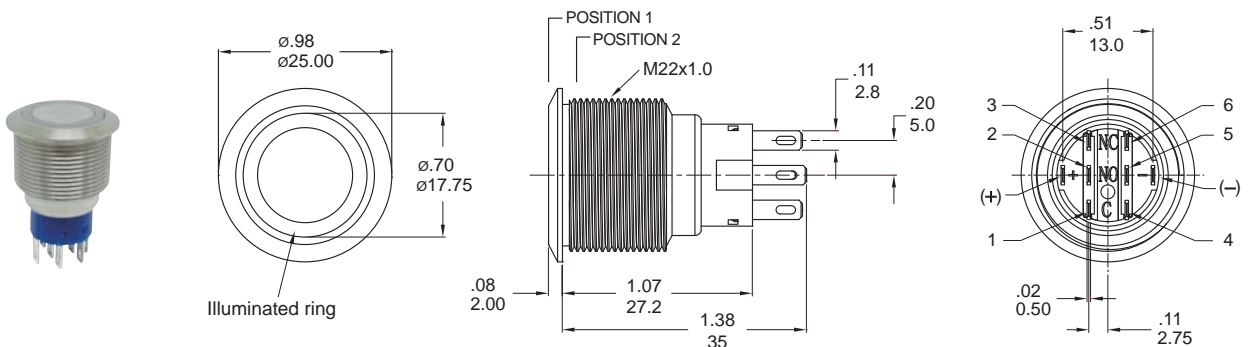
E1 / E3 Ring (Moveable)+Power logo



Available with double flat body type only.

## ▼ DIMENSION

Flat button



Model name. MPB22-A0F20E-112-JQ



IP 67  
ACCORDING TO  
EN 60528:1981+A1:2001  
IEC 60529:2001



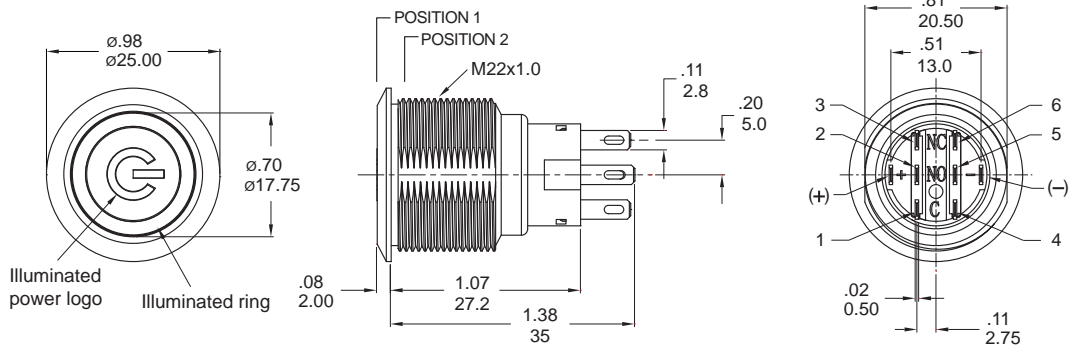
# MPB22 Series

## 22mm Metal Pushbutton Switches



MPB22  
Pushbutton Switches

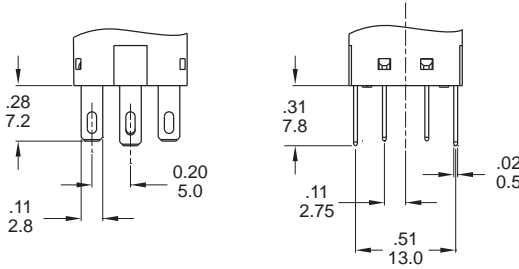
### Flat button



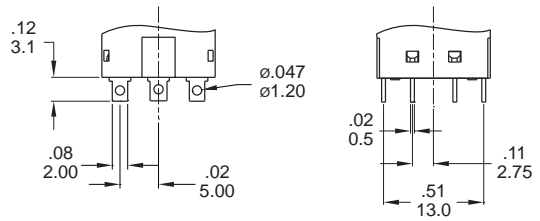
Model name: MPB22-A0F20E1-112-JQ

## ▼ TERMINAL OPTIONS

### J Solder terminal (std)



### S Short solder terminal



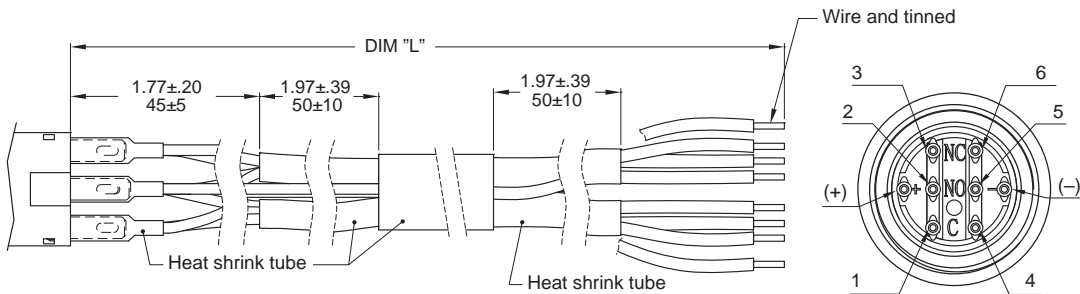
## ▼ WIRE OPTIONS

### TX Wire leads UL3385 18 AWG (Flying lead Terminal)

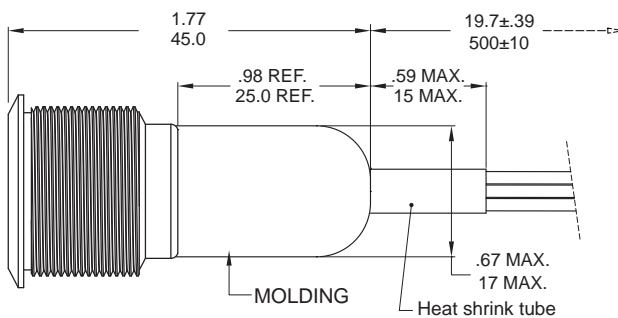
#### Wires

CODE	DIM "L"
T1	500
T2	1000
T3	1500
T4	2000

Units: mm



### D1 Molding, 500mm wire leads UL3385 18 AWG



#### Wires:

- Yellow wire - Terminal 1 and 4
- Purple wire - Terminal 2 and 5
- Green wire - Terminal 3 and 6
- Red wire - LED (+) Positive
- Black wire - LED (-) Negative

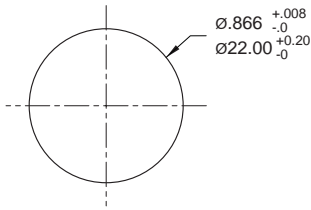
\* Please consult sales for additional wire options.



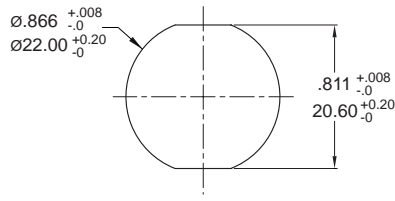
IP 67  
ACCORDING TO  
EN 60529:1991+A1:2001  
IEC 60529:2001



## ▼ PANEL MOUNTING



Round



Double flat

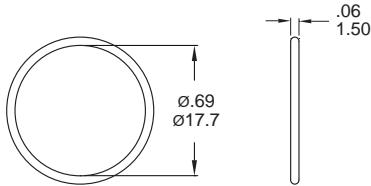
Panel thickness:  
.394inch(10.0 mm) MAX.

## ▼ HARDWARE

- \* Standard hardware : 1 nut, 1 O-ring
- \* For further information please consult sales representativity.

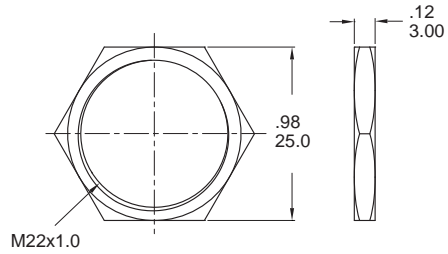
### O-RING (Std.)

Model name. FCP-MPB07



### NUT (Std.)

Model name. MNU-MPB02



## ▼ O-RING INSTALLATION

Proposal	In front of the panel	Behind the panel
Installation Diagram		