



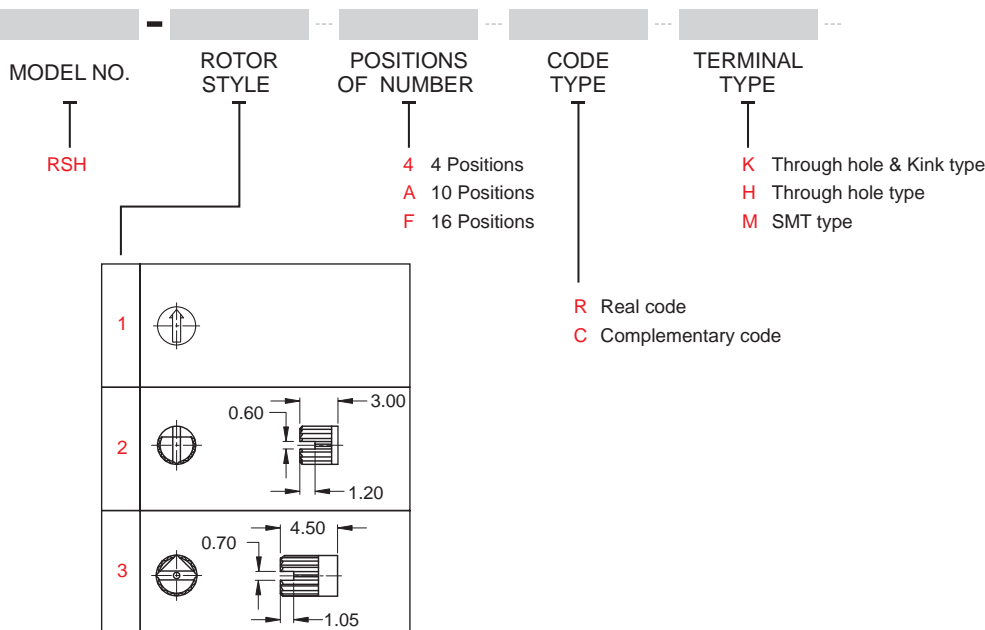
SPECIFICATIONS

- MAXIMUM RATING** : 50VDC. 100mA.
- MINIMUM RATING** : 20VDC. 10A.
- CONTACT RESISTANCE** : 100mΩ MAX.
- INSULATION RESISTANCE** : 100VDC-1000M MIN.
- WITHSTAND VOLTAGE** : 250VAC-1 MINUTE
- ROTARY TORQUE** : 40~200gf.cm
- TOTAL ROTARY ANGLE** : 360° (4,10,16 STEPS)
- LIFE CYCLE** : 10,000 STEPS

MATERIALS

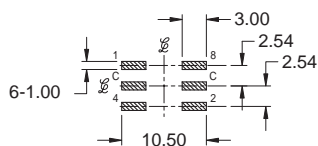
- FRAM**: PA+G
- COVER**: SUS
- ROTOR**: LCP+G
- TERMINAL**: BRASS, Au/Su PLATED
- CONTACT**: BeCu, Au PLATED
- O-RING**: SILICONE RUBBER
- SPACER**: SUS

HOW TO ORDER



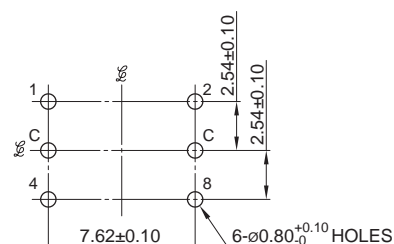
▼ P.C.B. LAYOUT

Terminal type M



Hatched Area Show Soldering Land

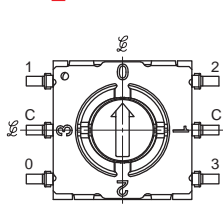
Terminal type K



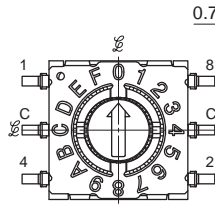


▼ DIMENSION

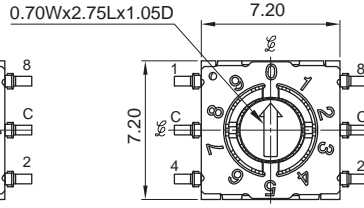
RSH-1_RM



4 POSITIONS
Model name. RSH-14RM



16 POSITIONS
Model name. RSH-1FRM



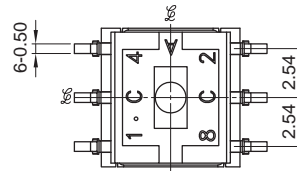
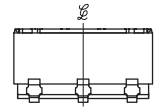
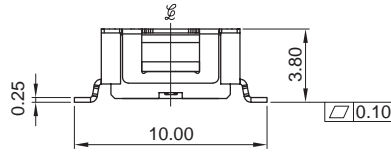
10 POSITIONS
Model name. RSH-1ARM

CIRCUIT CHART

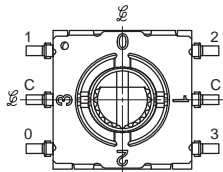
		CODE				
		C	0	1	2	3
0	●	●				
1	●		●			
2	●			●		
3	●					●

4 POSITIONS

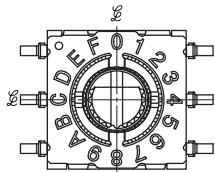
		CODE				
		C	1	2	4	8
10 POSITIONS		0	●			
1	●		●			
2	●			●		
3	●				●	
4	●					●
5	●		●			
6	●			●		
7	●				●	
8	●					●
9	●		●			
16 POSITIONS		A	●			
B	●		●			
C	●			●		
D	●				●	
E	●		●			
F	●				●	



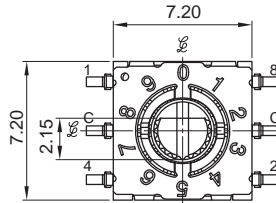
RSH-2_RM



4 POSITIONS
Model name. RSH-24RM



16 POSITIONS
Model name. RSH-2FRM



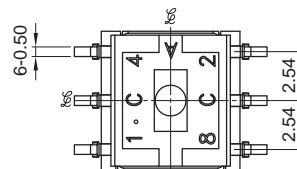
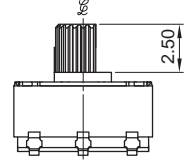
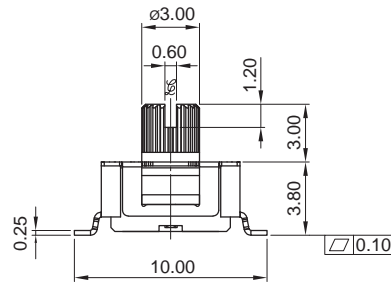
10 POSITIONS
Model name. RSH-2ARM

CIRCUIT CHART

		CODE				
		C	0	1	2	3
0	●	●				
1	●		●			
2	●			●		
3	●					●

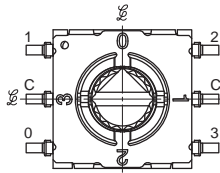
4 POSITIONS

		CODE				
		C	1	2	4	8
10 POSITIONS		0	●			
1	●		●			
2	●			●		
3	●				●	
4	●					●
5	●		●			
6	●			●		
7	●				●	
8	●					●
9	●		●			
16 POSITIONS		A	●			
B	●		●			
C	●			●		
D	●				●	
E	●		●			
F	●				●	

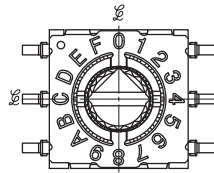


▼ DIMENSION

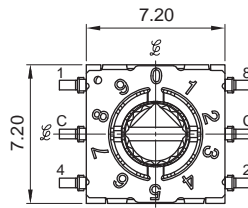
RSH-3_RM



4 POSITIONS
Model name. RSH-14RM



16 POSITIONS
Model name. RSH-3FRM



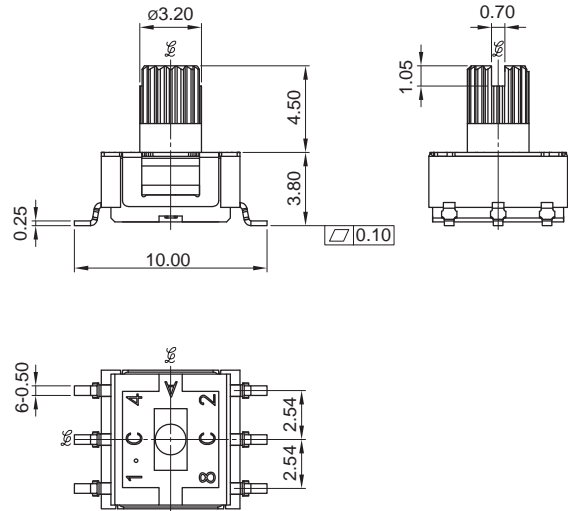
10 POSITIONS
Model name. RSH-3ARM

CIRCUIT CHART

		CODE				
		C	0	1	2	3
0	●					
1	●		●			
2	●				●	
3	●					●

4 POSITIONS

		CODE				
		C	1	2	4	8
0	●					
1	●					
2	●					
3	●					
4	●					
5	●					
6	●					
7	●					
8	●					
9	●					
A	●					
B	●					
C	●					
D	●					
E	●					
F	●					



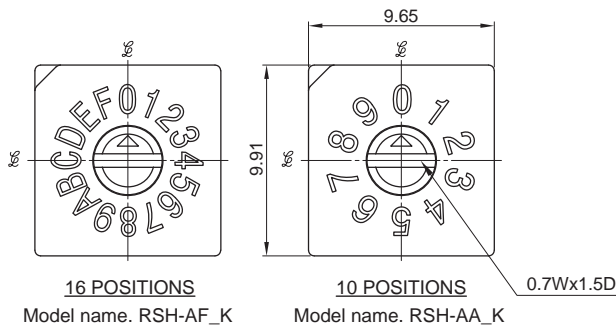
Through hole & Kink type

SPECIFICATIONS

- MAXIMUM RATING :** 24VDC. 25mA.
- MINIMUM RATING :** 3.5VDC. 10 μ A.
- CONTACT RESISTANCE :** 200m Ω MAX.
- INSULATION RESISTANCE :** 250VDC-100M MIN.
- WITHSTAND VOLTAGE :** 250VAC-1 MINUTE
- ROTARY TORQUE :** 350gf.cm MAX.
- TOTAL ROTARY ANGLE :** 360° (10 or 16 STEPS)
- LIFE CYCLE :** 20,000 STEPS

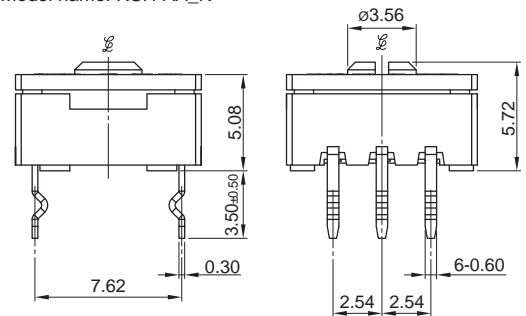
MATERIALS

- FRAM:** PA+G
- COVER:** PA+G
- ROTOR:** LCP+G
- TERMINAL:** BRASS, Au/Su PLATED
- CONTACT:** BeCu, Au PLATED
- O-RING:** SILICONE RUBBER
- SPACER:** SUS



16 POSITIONS
Model name. RSH-AF_K

10 POSITIONS
Model name. RSH-AA_K

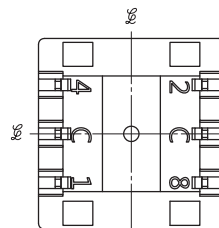


CIRCUIT CHART

		CODE				
		C	1	2	4	8
0	●					
1	●					
2	●					
3	●					
4	●					
5	●					
6	●					
7	●					
8	●					
9	●					
A	●					
B	●					
C	●					
D	●					
E	●					
F	●					

REAL CODE
RSH-A_RK

GRAY CODE
RSH-A_GK





▼ DIMENSION

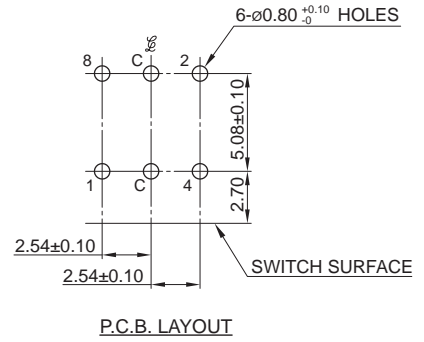
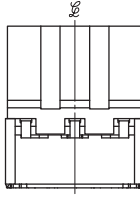
RSC-1ARR

SPECIFICATIONS

- MAXIMUM RATING** : 50VDC. 100mA.
- MINIMUM RATING** : 20VDC. 1A μ .
- CONTACT RESISTANCE** : 100m Ω MAX.
- INSULATION RESISTANCE** : 100VDC-1000M MIN.
- WITHSTAND VOLTAGE** : 250VAC-1 MINUTE
- ROTARY TORQUE** : 40~200gf.cm
- TOTAL ROTARY ANGLE** : 360° (10 STEPS)
- LIFE CYCLE** : 10,000 STEPS

MATERIALS

- FRAM**: PA+G
- COVER**: SUS
- ROTOR**: LCP+G
- TERMINAL**: PBS, Au/Su PLATED
- CONTACT**: BeCu, Au PLATED
- O-RING**: SILICONE RUBBER
- SPACER**: SUS
- BLOCK**: PA+G



CIRCUIT CHART

		CODE				
		C	1	2	4	8
POSITIONS	0	●				
	1	●	●			
	2	●		●		
	3	●	●	●		
	4	●			●	
	5	●			●	
	6	●	●	●	●	
	7	●	●	●	●	
	8	●				●
	9	●	●			●

